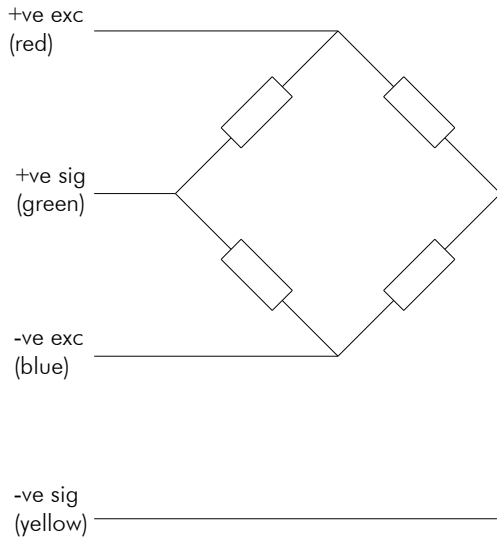


Low Profile Stainless Steel Series



- Range 5kN to 1000kN
- Low profile design
- Low deflection
- Atex certification available
- High natural frequency
- Excellent rejection of extraneous forces
- Fatigue Rated to 10^9 full cycles

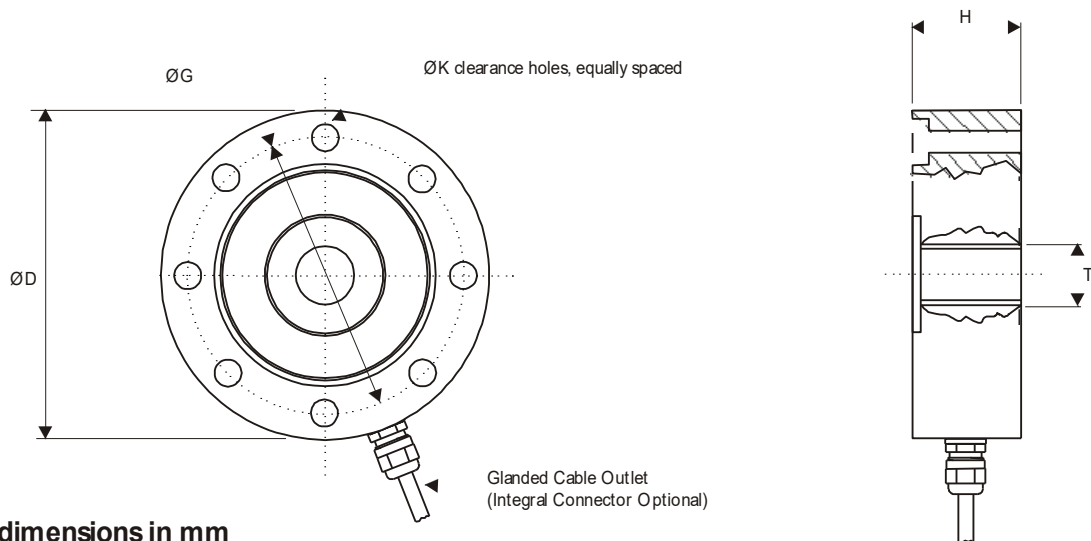


Options :
 Other ranges available on request
 Full range of mounting options
 Connector version
 Double bridge version
 Atex approved version

| | | |
|---------------------------|---|---------------|
| Capacities | ±5, ±10, ±25, ±50 ±100, ±200, ±500, ±1000 | kN |
| Full Load Output | 2.0 (±0.25%) | mV/V |
| Zero Load Output | <±2.0 | % |
| Excitation (Max) | 10 (15) | V |
| Accuracy | <0.1 | % |
| Repeatability | <0.03 | % |
| Input Resistance | 375(±20) | Ω |
| Output Resistance | 350 | Ω |
| Compensated Temp. Range | -10 to +40 | °C |
| Operating Temp. Range | -20 to +60 | °C |
| Temp. Coefficient on Zero | <0.0050 | % Capacity/°C |
| Temp Coefficient on Span | <0.0050 | % Capacity/°C |
| Safe Overload | 150 | % |
| Insulation | >500 @100Vdc | MΩ |
| Environmental Protection | IP65 | |
| Cable Length | 4 | m |

Specifications subject to change without notice

| Range (kN) | D | H | G | K | T |
|---------------|-----|----|-----|------------|-----------|
| 5, 10, 25, 50 | 107 | 33 | 90 | 8 off Ø8.5 | M20 x 2.5 |
| 100,200 | 155 | 45 | 130 | 12 off Ø11 | M36 x 2 |
| 500, 1000 | 280 | 78 | 230 | 16 off Ø17 | M64 x 6 |



All dimensions in mm

Elite Transducers Ltd

5&6 Zephyr House, Calleva Park, Aldermaston, Reading, RG7 8JN
 Tel: (+44) 0118 9811750 Fax: (+44) 0118 9811751
 E-mail: info@elitetransducers.co.uk

LPMW
 ATEX / IECEx Approved to
 Ex ia IIC T6
 Ex tb IIIC Db T85°C
 (-40°C ≤ T_o ≤ +60°C)

