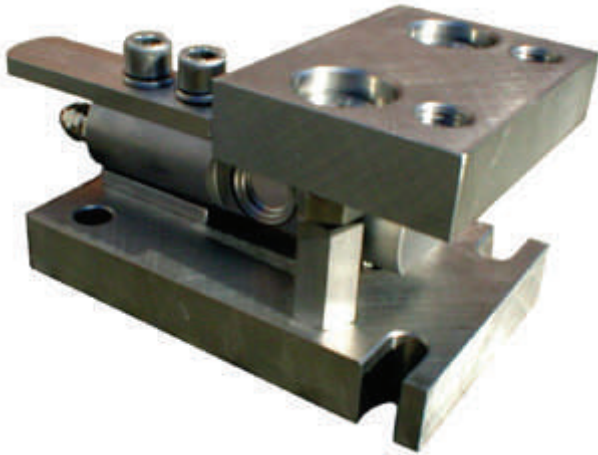
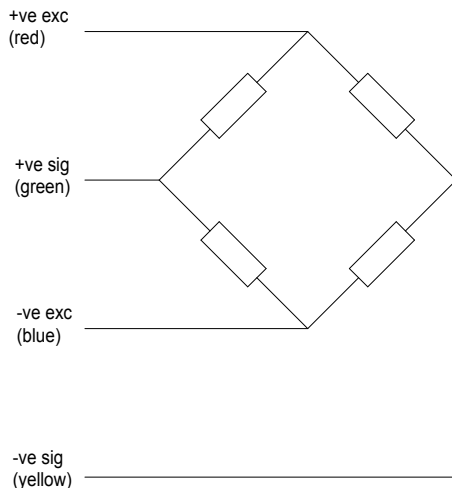


Single Beam Silo Mount Vessel Weighing Assembly



- Low height
- Stainless Assembly
- Stainless load cell
- High accuracy
- Sealed to IP68
- High resistance to off axis loads

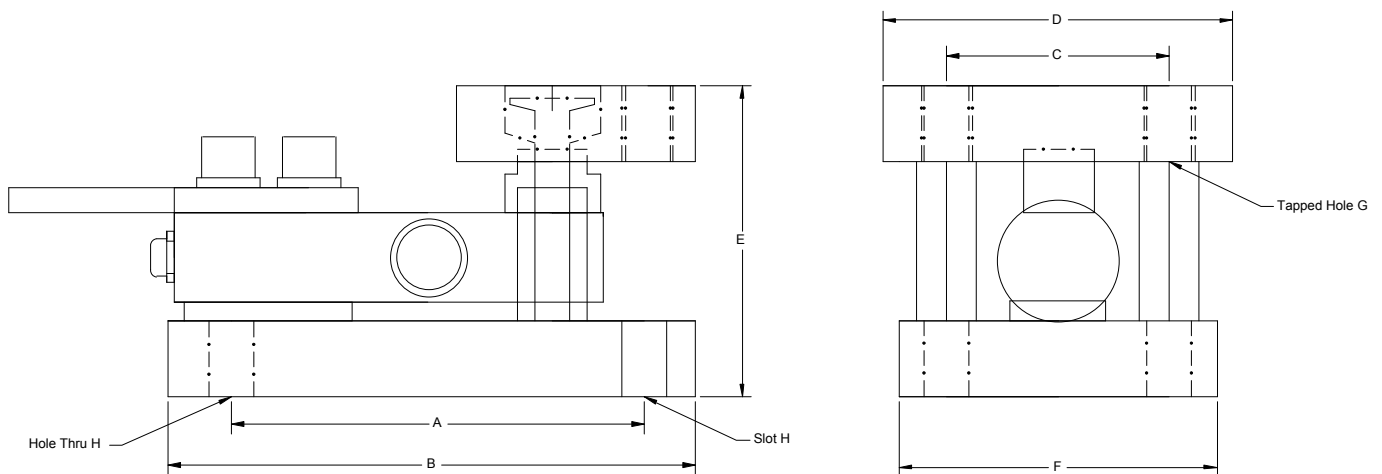


Capacities	250-2000	Kg
Full Load Output	2.0 ($\pm 0.25\%$)	mV/V
Zero Load Output	$< \pm 2.0$	%
Excitation (Max)	10 (15)	V
Accuracy	< 0.05	%
Repeatability	< 0.01	%
Input Resistance	375 (± 20)	Ω
Output Resistance	350 (± 2)	Ω
Compensated Temp. Range	-10 to +50	$^{\circ}\text{C}$
Operating Temp. Range	-20 to +70	$^{\circ}\text{C}$
Temp. Coefficient on Zero	< 0.005	% Capacity/ $^{\circ}\text{C}$
Temp Coefficient on Span	< 0.005	% Capacity/ $^{\circ}\text{C}$
Safe Overload	150	%
Insulation	$> 500 @ 100\text{Vdc}$	M Ω
Environmental Protection	IP68	

All dimensions in mm

Specifications subject to change without notice

Capacity	A	B	C	D	E	F	$\text{\O}G$	$\text{\O}H$
0.25 – 2t	130	165	70	110	100	100	M16	13.6



Elite Transducers Ltd

5&6 Zephyr House, Calleva Park, Aldermaston, Reading, RG7 8JN
 Tel: (+44) 0118 9811750 Fax: (+44) 0118 9811751
 E-mail: info@elitetransducers.co.uk

SELB
 ATEX / IECEx Approved to
 Ex ia IIC T6
 Ex tD A20 IP68 T85C

