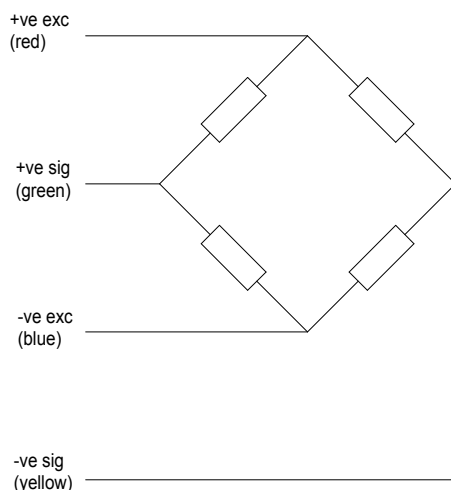




ET Stainless Series

Underhook/Inline Load Link

- Range 1.5 to 150 tonne
- Robust stainless steel construction
- For use with standard shackle
- Sealed to IP68
- Atex certification available

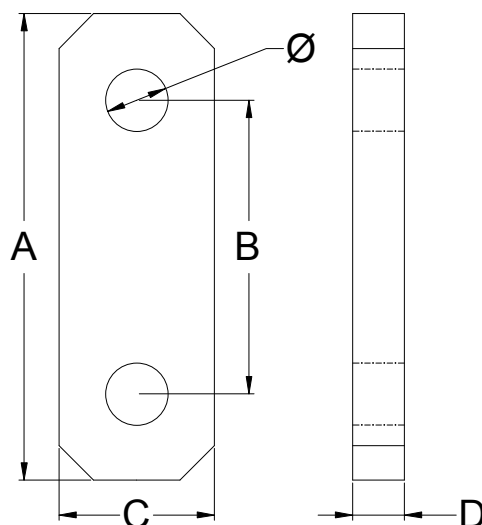


Capacities	1.5, 2.5, 5.0, 7.5, 10.0, 12.5, 15.0, 20.0, 25.0, 150	tonne
Full Load Output	1 (nominal)	mV/V
Zero Load Output	± 2.0	%
Excitation (Max)	10 (15)	V
Accuracy	<math>< 0.1</math>	%
Repeatability	<math>< 0.05</math>	%
Input Resistance	375 (± 20)	Ω
Output Resistance	350 (± 2)	Ω
Compensated Temp. Range	0 to +60	$^{\circ}\text{C}$
Operating Temp. Range	-10 to +80	$^{\circ}\text{C}$
Temp. Coefficient on Zero	<math>< 0.0010</math>	% Capacity/ $^{\circ}\text{C}$
Temp Coefficient on Span	<math>< 0.0010</math>	% Capacity/ $^{\circ}\text{C}$
Safe Overload	300	%
Insulation	>500 @100Vdc	M Ω
Environmental Protection	IP68	

Specifications subject to change without notice

Type	A	B	C	D	Dia.
1.5 te	175	110	70	17	16
2.5/5 te	185	120	70	25	20/26
7.5 te	200	135	70	25	30
10/12.5/15 te	270	170	90	30	36/39/43
20/25 te	350	220	120	50	52

All dimensions in mm



- Options :
- Higher ranges available on request
 - Plug / Socket breakdown at link
 - Second redundancy gauge bridge
 - Internal signal amplifier - 2 or 3 wire
 - Witness by Lloyds Reg. Of Shipping, ABS etc.
 - Submersible
 - ATEX approval
 - Internal ATEX Amp - 4-20mA current loop
 - Colour code - Supply:Red - Signal:Green
 - Carry case for transportation and storage of link available

Elite Transducers Ltd

5&6 Zephyr House, Calleva Park, Aldermaston, Reading, RG7 8JN
 Tel: (+44) 0118 9811750 Fax: (+44) 0118 9811751
 E-mail: info@elitetransducers.co.uk

SLL
 ATEX / IECEx Approved to
 Ex ia IIC T6
 Ex tD A20 IP68 T85C

