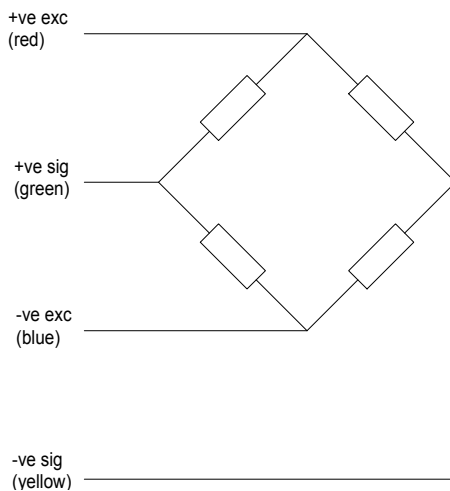


Bin Lift Cell Single Point



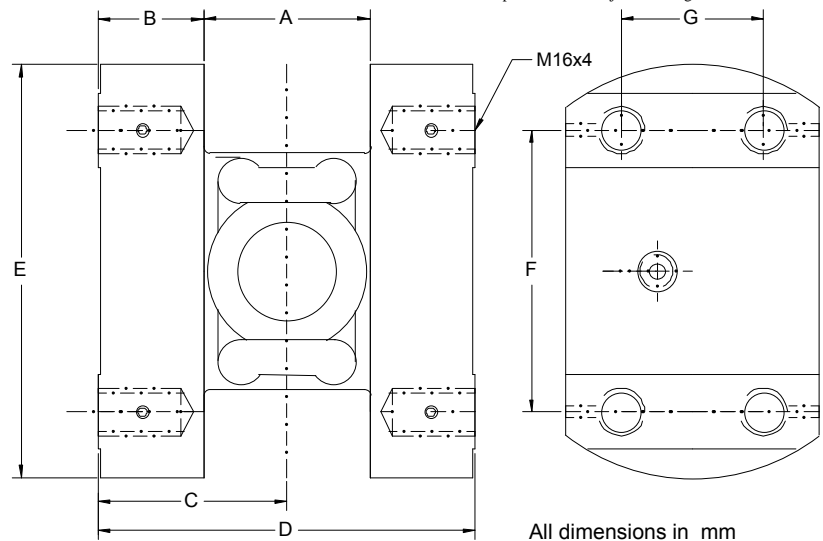
- Welded covers
- 3 year warranty
- Stainless steel
- Easy installation
- Ranges 1000kg to 5000kg
- Excellent dynamic loading capability



Capacities	1000,2000,5000	Kg
Rated Output	0.88 (±0.25%)	mV/V
Combined Error	In Accordance with OIML R60 Class C/3000 Divisions	%
Non Repeatability		%
Creep (30 mins)		%
Temp. Coefficient on Zero		% Capacity/°C
Temp Coefficient on Span		% Capacity/°C
Compensated Temp. Range	-10 to +50	°C
Operating Temp. Range	-20 to +70	°C
Safe Overload	150	%
Ultimate Overload	300	%
Zero Balance	<1	% FRO
Input Resistance	380 (±30)	Ω
Output Resistance	350 (±1.5)	Ω
Insulation	>5000 @100Vdc	MΩ
Excitation (Max)	10 (15)	V
Environmental Protection	IP68	

Specifications subject to change without notice

The Bin Lift Cell range of load cells are approved for commercial weighing to **OIML R60 2000**. The side mounting load cell has been specifically designed for the extremely high fatigue stress and impact loads experienced in on-board vehicle weighing. The fully welded construction of the Bin Lift cell makes it an ideal unit for the hostile environment experienced in applications where durability and high accuracy are of paramount importance.



Capacity	A	B	C	D	E	F	G
1, 2, 5te	56	35.5	63.5	127	139	95	46

Elite Transducers

5&6 Zephyr House, Calleva Park, Aldermaston, Reading, RG7 8JN

Tel: (+44) 0118 9811750 Fax: (+44) 0118 9811751

E-mail: info@elitetransducers.co.uk