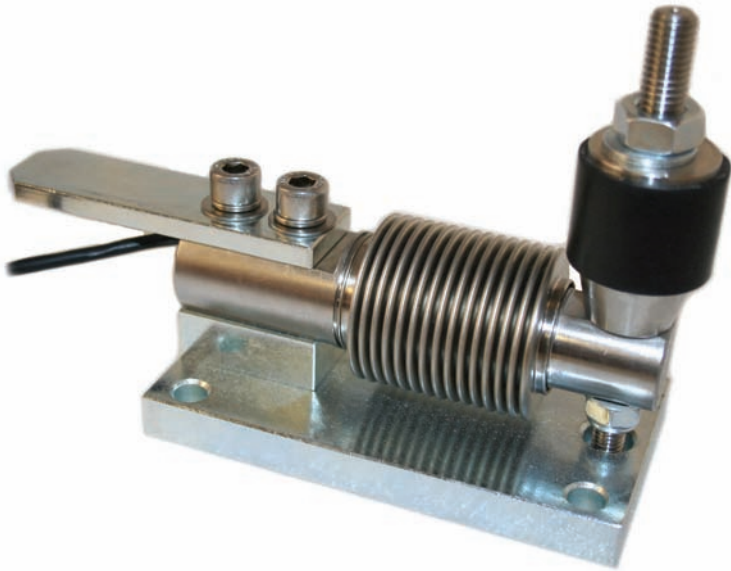
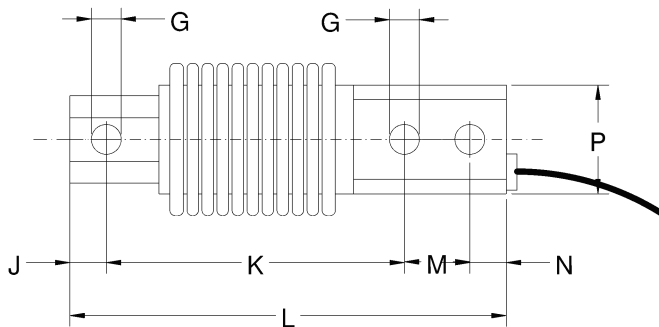
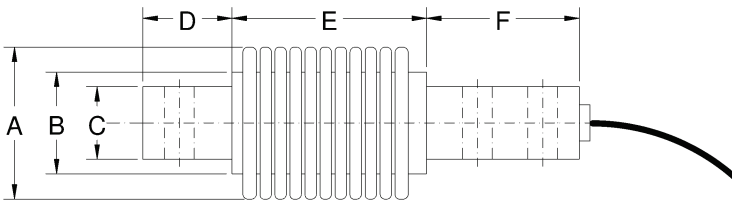


Bellows Bending Beam Stainless Steel



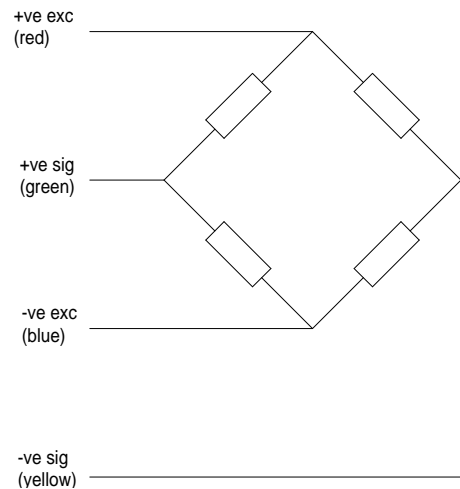
- Hermetically sealed, fully welded construction
- Easy to install
- Ranges 10kg to 200kg
- Atex versions available
- Suitable for belt and tank weighing, bag fillers and platforms
- Easy installation

Rated output	2±0.1%	mV/V
Accuracy class	3000	n.OIML
Combined error	<±0.017	%
Non repeatability	<±0.015	%
Creep 30 mins	<±0.016	%
Temp effect on zero	<±0.001	%/°C
Temp effect on span	<±0.001	%/°C
Compensated temp range	-10 to +40	°C
Operating temp range	-20 to +50	°C
Safe overload	150	%
Ultimate overload	200	%
Zero balance	<1	%
Input resistance	400±20	Ω
Output resistance	350±3	Ω
Insulation resistance	>5000	MΩ@100VDC
Supply Voltage (nominal)	10	V
Max Voltage	15	V



Range 10-200Kg						
ØA	ØB	C	D	E	F	ØG
42	34	20	24.5	53.5	42	8.2
ØH	J	K	L	M	N	P
27	10	82	120	18	10	30
4m screened polyurethane cable Construction 17/4/PH stainless steel						

Specifications subject to change without notice



Elite Transducers Ltd

5&6 Zephyr House, Calleva Park, Aldermaston, Reading, RG7 8JN
Tel: (+44) 0118 9811750 Fax: (+44) 0118 9811751
E-mail: info@elitetransducers.co.uk

ATEX / IECEx Approved to
Ex ia IIC T6
Ex tD A20 IP68 T85C

